

FOR INTERESTS AND NOTIFICATIONS SEE SHEET 6

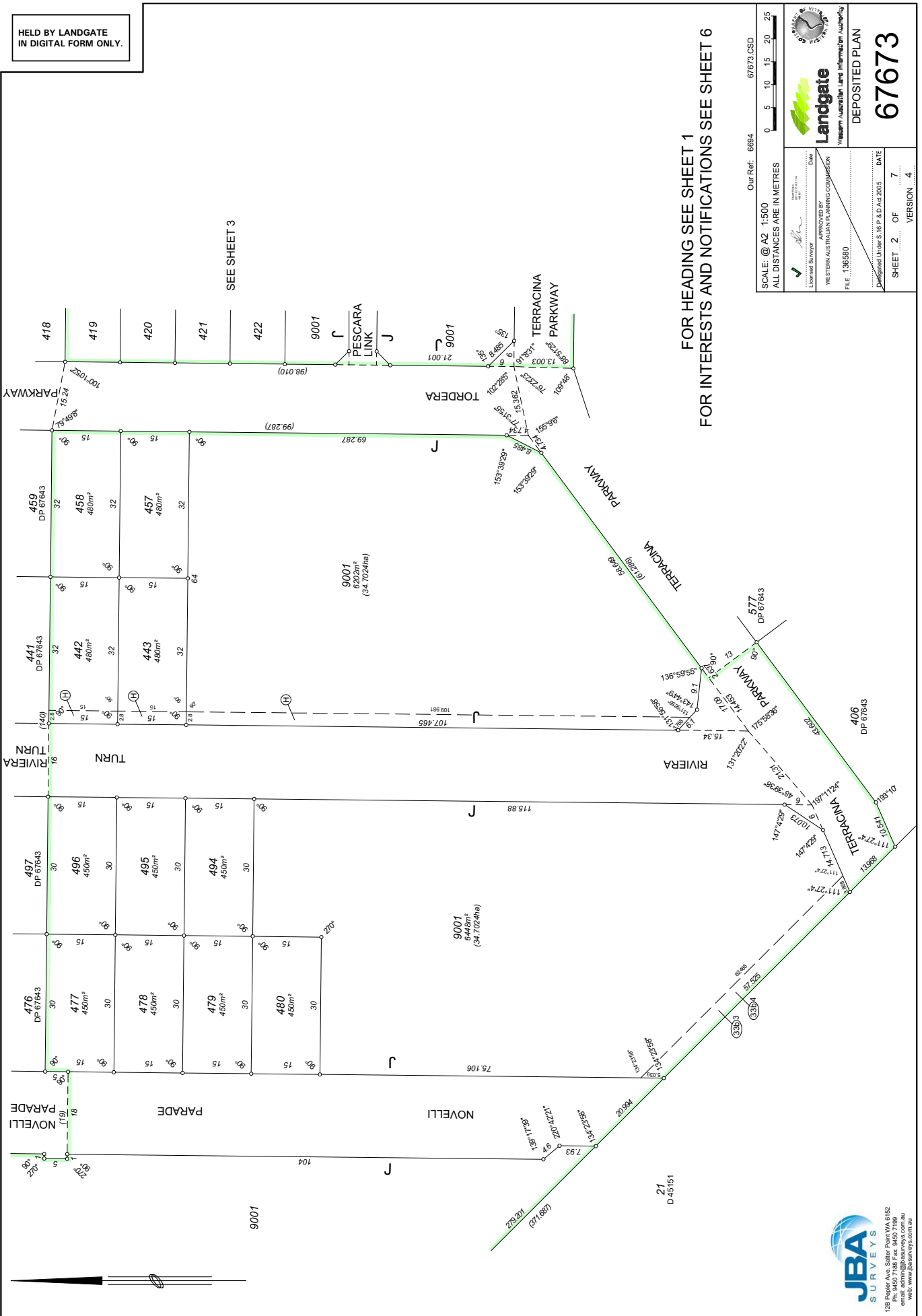
SPECIAL SURVEY AREA SUBDIVISION

HELD BY LANDGATE IN DIGITAL FORM ONLY.



SURVEY CARRIED OUT UNDER REGULATION 26A SPECIAL SURVEY AREA GUIDELINES SEE SHEET 7 FOR SURVEY INFORMATION

HELD BY LANDGATE
IN DIGITAL FORM ONLY.



SEE SHEET 3

FOR HEADING SEE SHEET 1
FOR INTERESTS AND NOTIFICATIONS SEE SHEET 6

Our Ref: 6894 67673.GSD

SCALE: @ A2 1:500
ALL DISTANCES ARE IN METRES

0 5 10 15 20 25

Landgate
Western Australian Land Information Authority

DEPOSITED PLAN
67673

APPROVED BY
WESTERN AUSTRALIAN PLANNING COMMISSION

FILE 136580

DATE 7

SHEET 2 OF 7

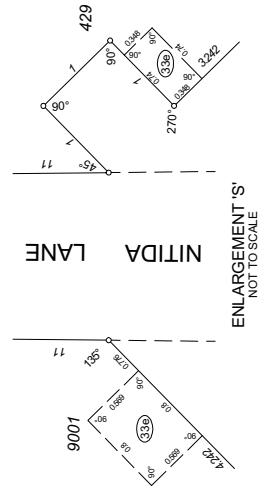
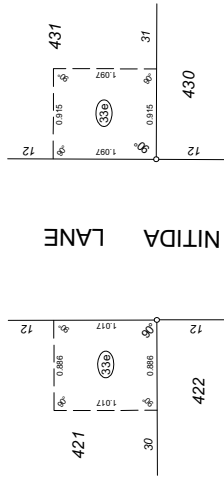
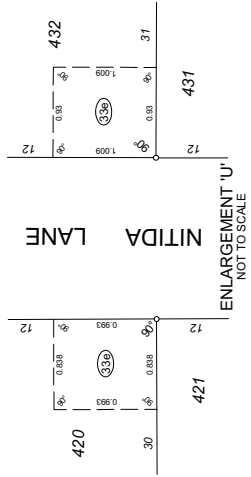
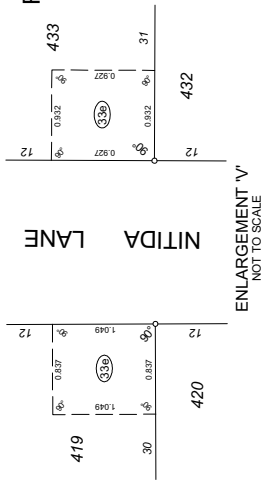
VERSION 4

JBA
SURVEYS

128 Proyer Ave, Siler Point WA 6152
Ph: 9450 7188 Fax: 9450 7189
email: admin@jbasurveys.com.au
web: www.jbasurveys.com.au

HELD BY LANDGATE
IN DIGITAL FORM ONLY.

FOR HEADING SEE SHEET 1
FOR INTERESTS AND NOTIFICATIONS SHEET 6



Our Ref: 6694 67673.CSD
SCALE: @ A2 1:500
ALL DISTANCES ARE IN METRES

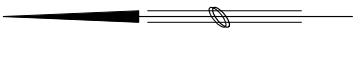
Landgate
Western Australian Land Information Authority

APPROVED BY
Landgate Surveyor

WESTERN AUSTRALIAN PLANNING COMMISSION
FILE 136580

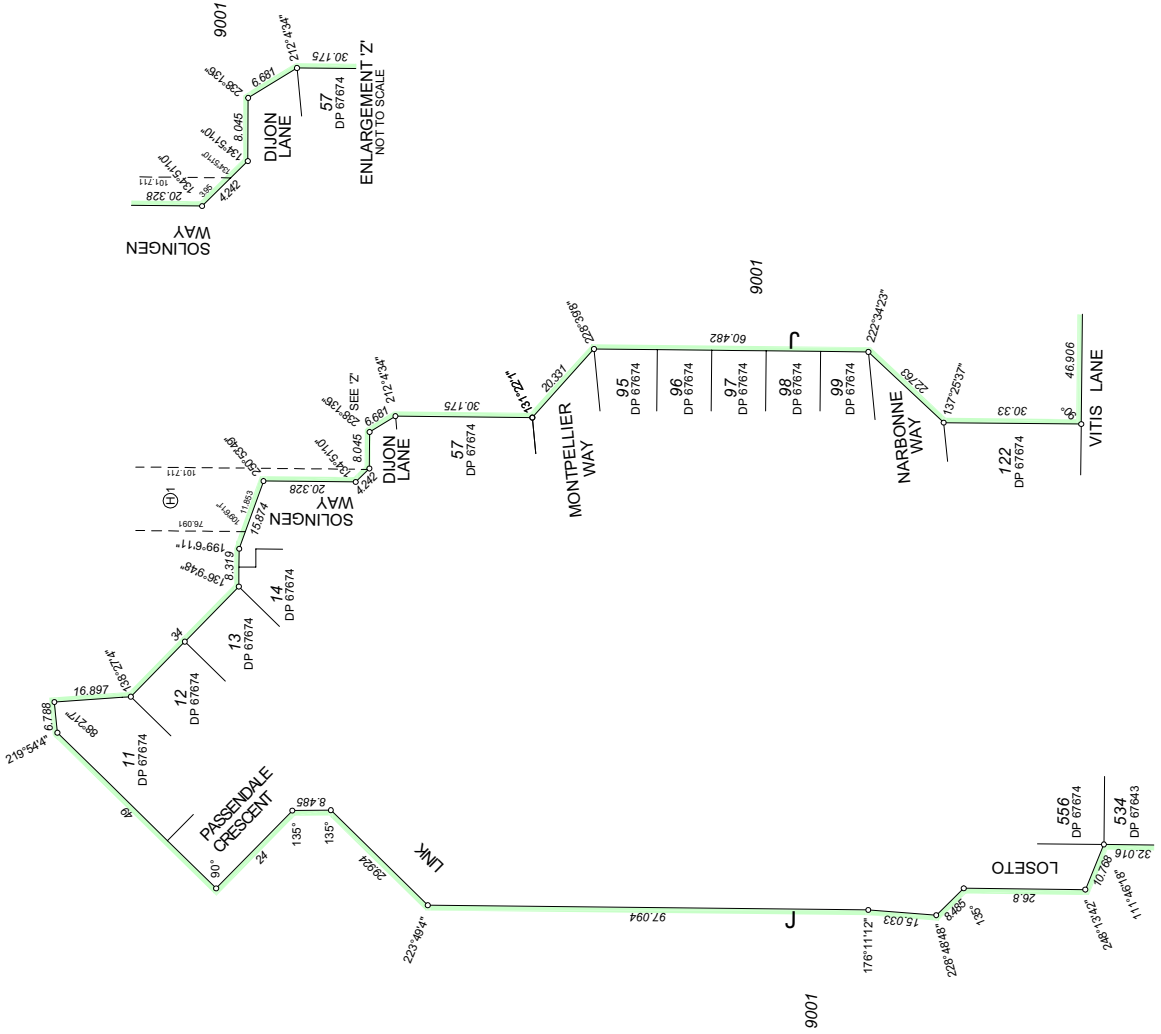
DATE 7
SHEET 3 OF 7
VERSION 4

DEPOSITED PLAN
67673



HELD BY LANDGATE
IN DIGITAL FORM ONLY.

FOR HEADING SEE SHEET 1
FOR INTERESTS AND NOTIFICATIONS SEE SHEET 6



Our Ref: 6694 67673.CSD

SCALE: @ A2 1:750
ALL DISTANCES ARE IN METRES

Landgate
Western Australian Land Information Authority

DEPOSITED PLAN
67673

APPROVED BY
WESTERN AUSTRALIAN PLANNING COMMISSION

FILE: 136580

DATE: 7

SHEET: 4 OF 7

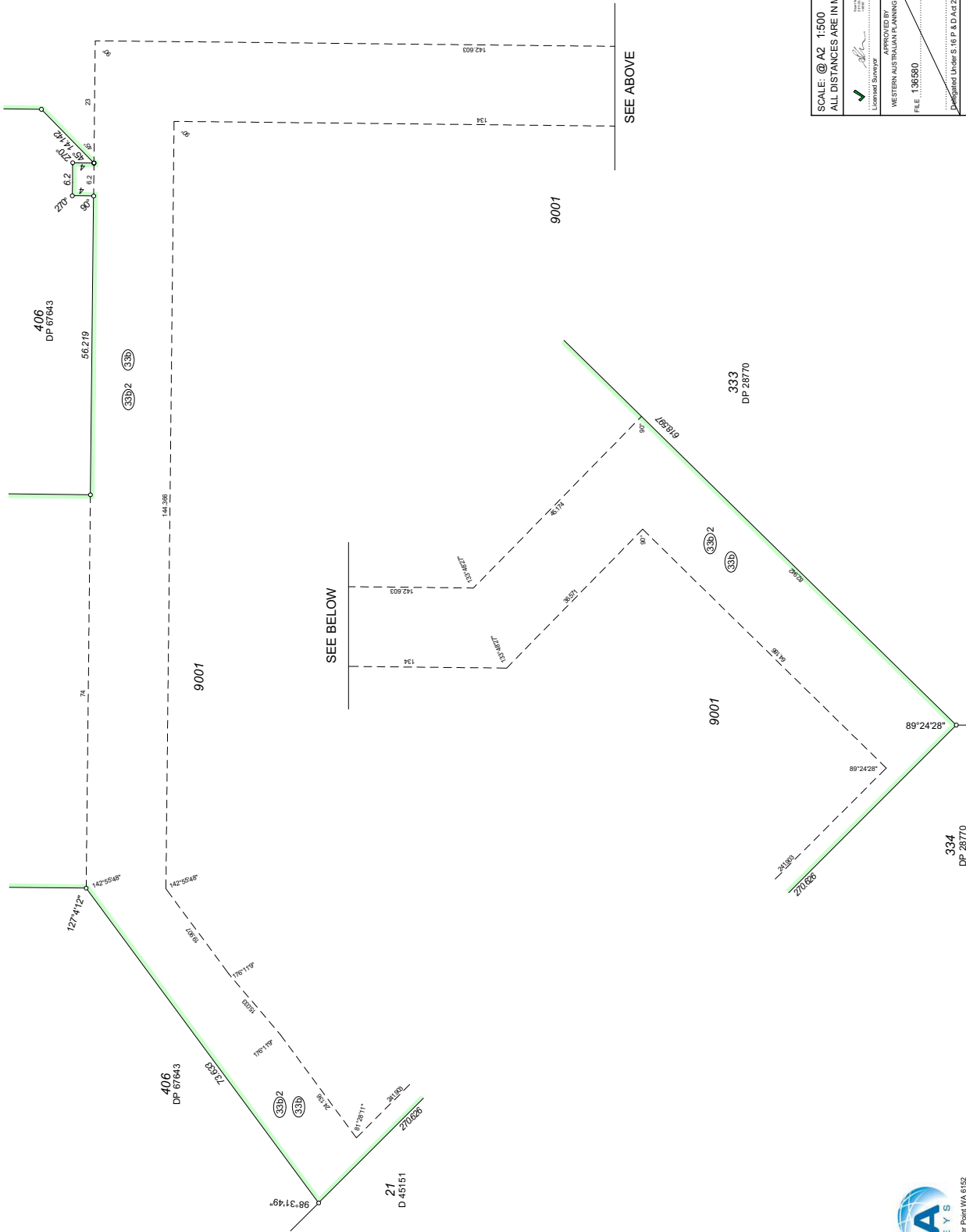
VERSION: 4

JBA
SURVEYS

128 Poplar Ave, Siler Point WA 6152
Ph: 9450 7188 Fax: 9450 7199
email: admin@jbasurveys.com.au
web: www.jbasurveys.com.au

HELD BY LANDGATE
IN DIGITAL FORM ONLY.

FOR HEADING SEE SHEET 1
FOR INTERESTS AND NOTIFICATIONS SHEET 6



SEE ABOVE

SEE BELOW

Our Ref: 6894 67673.CSD

SCALE: @ A2 1:500
ALL DISTANCES ARE IN METRES

0 5 10 15 20 25

Landgate
Western Australian Land Information Authority

DEPOSITED PLAN
67673

APPROVED BY
Landgate Survey
DATE

APPROVED BY
WESTERN AUSTRALIAN PLANNING COMMISSION
FILE 136580

Designated Under S.197 & S.198 OF THE ACT 2005

SHEET 5 OF 7
VERSION 4

JBA SURVEYS

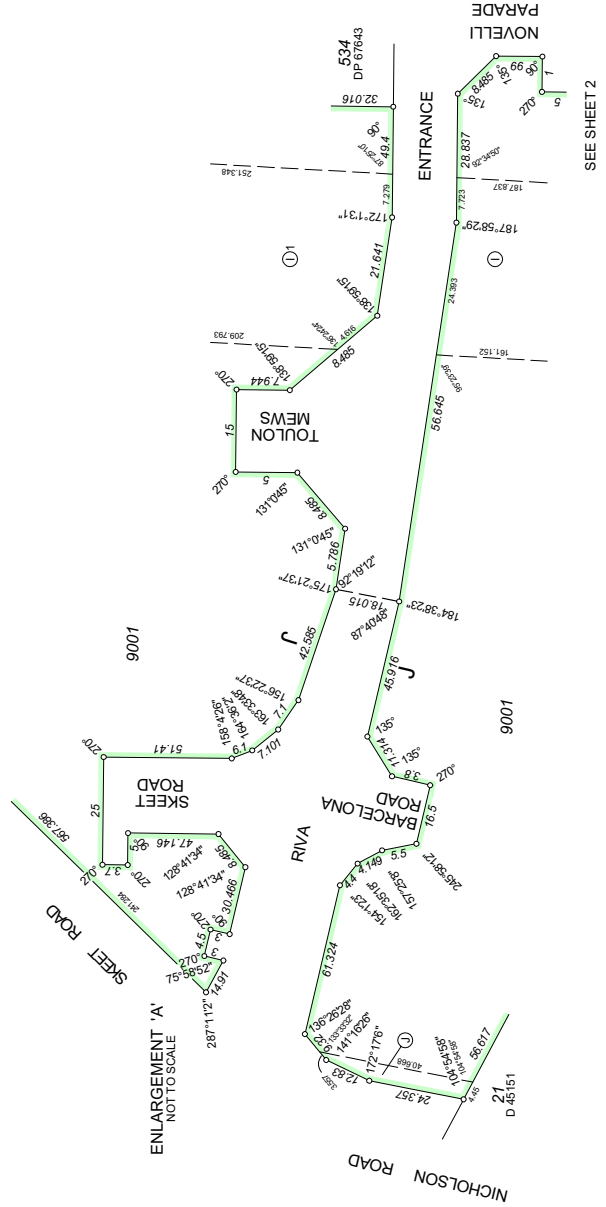
128 Poplar Ave, Saltier Point WA 6152
Ph: 9450 7188 Fax: 9450 7189
email: admin@jbasureys.com.au
web: www.jbasureys.com.au

HELD BY LANDGATE
IN DIGITAL FORM ONLY.

FOR HEADING SEE SHEET 1

INTERESTS AND NOTIFICATIONS

SUBJECT	PURPOSE	STATUTORY REFERENCE	ORIGIN	LAND BURDENED	BENEFIT TO	COMMENTS
(C)	EASEMENT (SEWERAGE)	SEC 187 OF THE P & D ACT, REG 33(b)	DOC A 867547	LOT 9001	STATE ELECTRICITY COMMISSION OF WA WATER CORPORATION	
(43D)	EASEMENT (WATER SUPPLY)	SEC 187 OF THE P & D ACT, REG 33(b)	DP 67643	LOT 9001	WATER CORPORATION	
(43D)2	EASEMENT (SEWERAGE)	SEC 187 OF THE P & D ACT, REG 33(b)	DP 67643	LOT 9001	WATER CORPORATION	
(43D)3	EASEMENT (WATER SUPPLY)	SEC 187 OF THE P & D ACT, REG 33(b)	DP 67643	LOT 9001	WATER CORPORATION	
(43D)4	EASEMENT (WATER SUPPLY)	SEC 187 OF THE P & D ACT, REG 33(b)	DP 67643	LOT 9001	WATER CORPORATION	
(J)	EASEMENT	ENERGY OPERATORS (POWERS) ACT 1979	DOC L612036	LOT 9001	ELECTRICITY NETWORKS CORPORATION	
(H2)	EASEMENT	ENERGY OPERATORS (POWERS) ACT 1979	DOC L612036	LOT 9001	ELECTRICITY NETWORKS CORPORATION	
(H)	EASEMENT	ENERGY OPERATORS (POWERS) ACT 1979	DOC L612036	LOTS 442, 443 & 9001	ELECTRICITY NETWORKS CORPORATION	
(H1)	EASEMENT	ENERGY OPERATORS (POWERS) ACT 1979	DOC L612036	LOT 9001	ELECTRICITY NETWORKS CORPORATION	
(I) & (I1)	EASEMENT	ENERGY OPERATORS (POWERS) ACT 1979	DOC L612036	LOT 9001	ELECTRICITY NETWORKS CORPORATION	
(33D)	EASEMENT (TELECOMMUNICATIONS SUPPLY SERVICES) RESTRICTIVE COVENANT	SEC 187 OF THE P & D ACT, REG 33(e)	THIS PLAN	LOTS 419-421, 9001, 429 & 431-433	TELSTRA	
	MEMORIAL	SEC 190D OF THE TLA	THIS PLAN & DOC L682222	ALL LOTS EXCEPT 9001	ALL LOTS EXCEPT 9001	
		SEC 676 OF THE WATER AGENCIES (POWERS) ACT 1984	THIS PLAN	ALL LOTS EXCEPT 9001	WATER CORPORATION	



Our Ref: 6894 67673.CSD

NOT TO SCALE



DEPOSITED PLAN

67673

SCALE: @ A2 ALL DISTANCES ARE IN METRES

APPROVED BY [Signature]

APPROVED BY [Signature]

WESTERN AUSTRALIAN PLANNING COMMISSION

FILE 136580

DATE 7

VERSION 4

DATE 7

VERSION 4

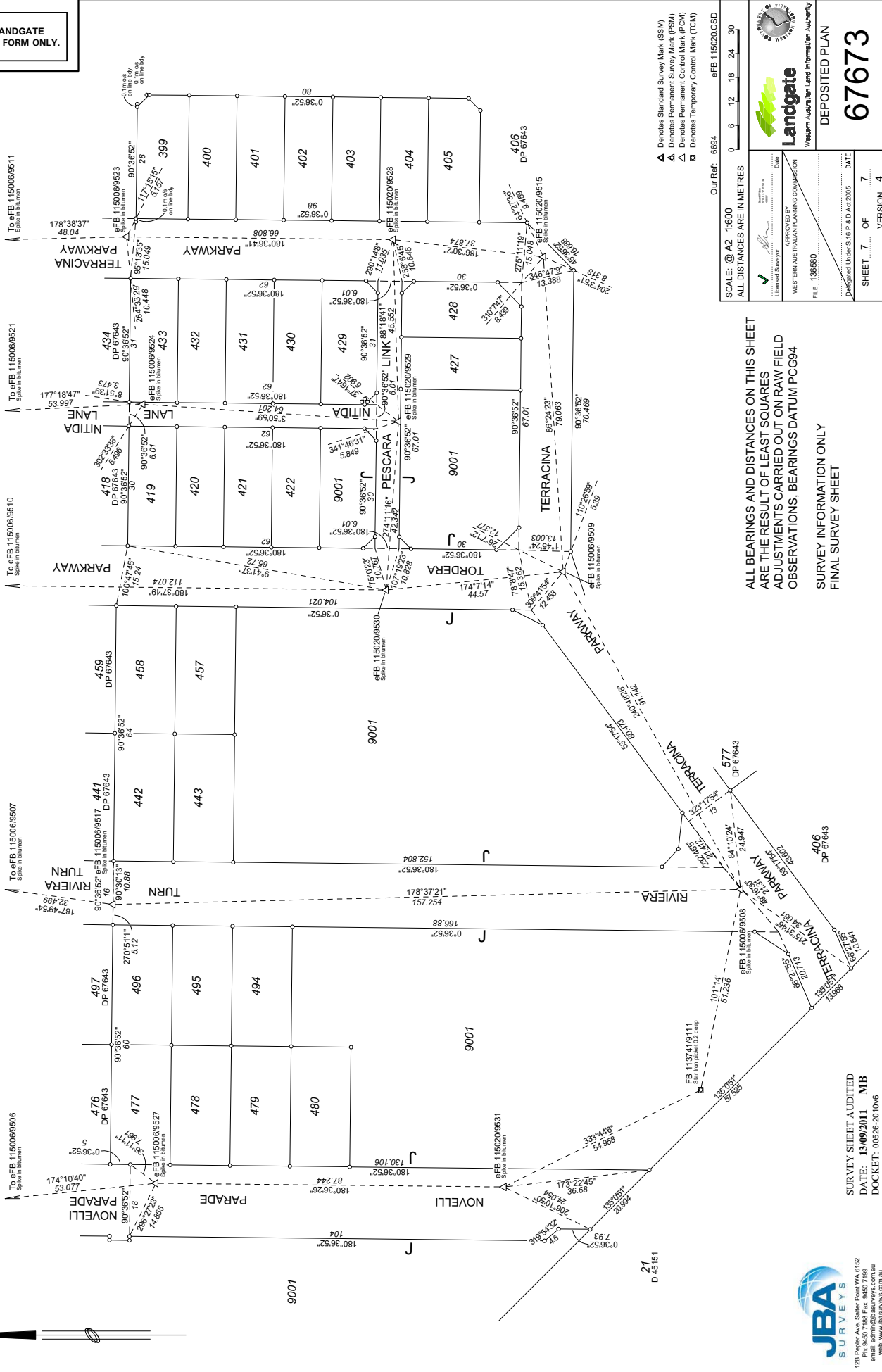
SEE SHEET 2



128 Poplar Ave, Saltier Point WA 6152
Ph: 9450 7188 Fax: 9450 7199
email: admin@jbasurveys.com.au
web: www.jbasurveys.com.au

Held by Landgate in digital form only.

FOR HEADING SEE SHEET 1
FOR INTERESTS AND NOTIFICATIONS SHEET 6



- ▲ Denotes Standard Survey Mark (SSM)
- △ Denotes Permanent Survey Mark (PSM)
- Denotes Permanent Control Mark (PCM)
- ◇ Denotes Temporary Control Mark (TCM)

Our Ref: 6894 eFB 115020.GSD
 SCALE: @ A2 1600
 ALL DISTANCES ARE IN METRES

Landgate
 Western Australian Land Information Authority

DEPOSITED PLAN
67673

APPROVED BY
 Licensed Surveyor
 WESTERN AUSTRALIAN PLANNING COMMISSION
 P.E. 136580

DATE: 13/09/2011
 SHEET 7 OF 7
 VERSION 4

ALL BEARINGS AND DISTANCES ON THIS SHEET
 ARE THE RESULT OF LEAST SQUARES
 ADJUSTMENTS CARRIED OUT ON RAW FIELD
 OBSERVATIONS, BEARINGS DATUM PCG84

SURVEY INFORMATION ONLY
 FINAL SURVEY SHEET

SURVEY SHEET AUDITED
 DATE: 13/09/2011 MB
 DOCKET: 00528-2010v6

JBA
 SURVEYS

12B Poplar Ave, Saltier Point WA 6152
 Ph: 9450 7188 Fax: 9450 7189
 email: admin@jbasurveys.com.au
 web: www.jbasurveys.com.au